



# PRATLEY

[www.pratley.com](http://www.pratley.com)



## Ex e ULTRA GLAND FOR LEAD SHEATH CABLE

### CERTIFICATION



IA CERTIFICATE N°  
SABS MS/M395U

Ex e • IP68

IEC / SANS 60079-0  
IEC / SANS 60079-7  
IEC / SANS 61241-0

Suitable for use in  
Zone 1, 2, 20, 21 and 22.

## FEATURES & BENEFITS

- Fully certified for use with Ex e Apparatus Zone 1, 2, 20, 21 & 22.
- IP 68 rated.
- Each gland accommodates a very wide range of cable sizes

### POLICY STATEMENT

"The performance of  
our products must  
exceed all others on  
the world market"

*KGM Pratty*  
CEO

# PRATLEY Ex e ULTRA GLAND FOR LEAD SHEATHED CABLE

This ultra high quality Ex e Fixed Nipple gland is for use with lead sheathed SWA cable (especially for medium voltage cable). The Exe Ultra Gland for lead sheathed cable is supplied complete with: custom made Lead Bush, high tensile Cone Ring, Cone Bush, Locknut, Gasket and Waterproofing Shroud

## BRASS NIPPLE

The fixed high-tensile brass nipple allows very generous tightening.

## GASKET

A specially constructed feathered gasket ensures seal integrity.

## LEAD BUSH

Custom made to fit your cable.

## GLAND BODY

Strong, generously dimensioned nickel plated brass.

## CONE RING

Fail safe design employs this unique high tensile cone ring which grips the armour at all times

## COMPRESSION NUT

Nickel plated brass.

## LOCKNUT

Supplied complete with locknut. Larger sizes are supplied with castellated locknuts for ease of tightening.

### Note:

If using single core cable, specify Brass Locknuts when ordering. This is to prevent eddy current heating.

## LOOSE CONE BUSH

Made from special distortion resistant brass, this vastly superior loose cone design ensures:

- Automatic self centering under the armour wires to achieve the very best grip possible!
- The armour wires are held properly in position prior to and during assembly.
- Complete armour grip integrity even during disassembly for statutory inspections!
- True fail safe design.

## WATERPROOFING SHROUD

The shroud seals onto the cable sheath and the Compression Nut for absolute protection against moisture

MEDIUM VOLTAGE HEAT SHRINK KIT (Not supplied by Pratley)

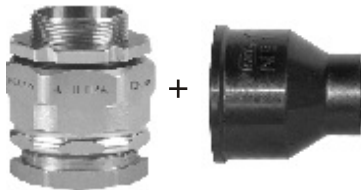
EARTHING KIT FITTED TO GLAND (Not supplied by Pratley)

## PRATLEY Ex e ULTRA GLAND FOR LEAD SHEATHED CABLE

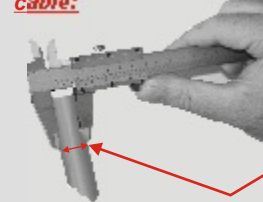
| Gland size     | 0     | 1     | 2     | 3     | 4     | 5     | 6     | 7     | 8     |
|----------------|-------|-------|-------|-------|-------|-------|-------|-------|-------|
| Nipple Thread  | M20   | M20   | M25   | M32   | M40   | M50   | M63   | M75   | M82   |
| Catalogue No.  | 77160 | 77161 | 77162 | 77163 | 77164 | 77165 | 77166 | 77167 | 77168 |
| Usual Pack Qty | 10    | 10    | 10    | 10    | 5     | 1     | 1     | 1     | 1     |

Use catalogue Number when ordering.

Fully certified to SANS and IEC specifications for use with Ex e apparatus in Zone 1, 2, 20, 21, & 22 areas.



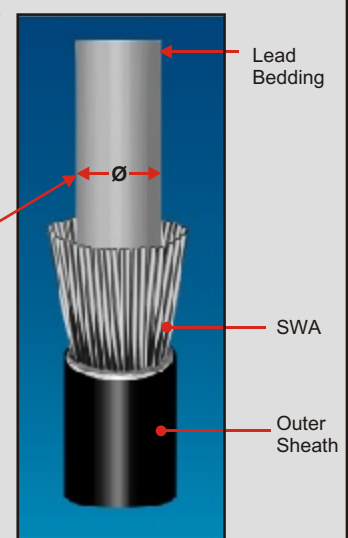
Please note, when ordering glands for lead sheathed cable:



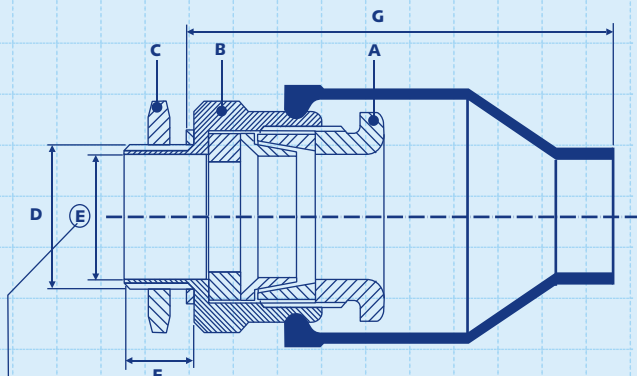
• The diameter over the lead must be measured.

• The lead sheath must be round.

• Contact Pratley for the correct gland & bush size.



## DIMENSIONS & SPECIFICATIONS



Use this dimension to establish maximum cable size gland can accommodate.

### DIMENSIONS (mm)

| Gland size          |            | 0          | 1          | 2          | 3          | 4          | 5          | 6          | 7          | 8     |
|---------------------|------------|------------|------------|------------|------------|------------|------------|------------|------------|-------|
| A - Compression Nut | A/F        | 20.8       | 25.0       | 33.0       | 40.0       | 50.0       | 63.0       | 76.0       | 95.2       | 102   |
|                     | A/C        | 23.1       | 28.0       | 37.0       | 44.5       | 55.6       | 70.0       | 86.0       | 106        | 113   |
| B - Body            | A/F        | 23.0       | 28.0       | 35.3       | 42.4       | 55.0       | 70.0       | 82.5       | 95.0       | 100.0 |
|                     |            | 25.6       | 31.1       | 39.3       | 47.4       | 61.2       | 78.4       | 92.8       | 108.0      | 108.0 |
| C - Locknut         | A/F        | 27.0       | 27.0       | 35.0       | 41.0       | 55.0       | 65.0       | 80.0       | 95.0       | 96.6  |
|                     | A/C        | 30.1       | 30.2       | 39.4       | 46.4       | 62.2       | 75.0       | 92.4       | 109.7      | 111.5 |
| D - Nipple Thread   | M20 x 1.5P | M20 x 1.5P | M25 x 1.5P | M32 x 1.5P | M40 x 1.5P | M50 x 1.5P | M63 x 1.5P | M75 x 1.5P | M82 x 1.5P |       |
| E - Nipple Bore     | 12.7       | 15.8       | 20.5       | 26.5       | 34.9       | 43.6       | 56.0       | 67.7       | 74.0       |       |
| F - Nipple Length   | 12.0       | 12.0       | 13.0       | 16.5       | 19.0       | 22.5       | 22.0       | 26.0       | 26.0       |       |
| G - Max. Protrusion | 63.1       | 59.8       | 70.6       | 78.2       | 90.3       | 101.1      | 115.5      | 135.0      | 137.0      |       |
| Overall Length      | 73.1       | 69.8       | 81.6       | 92.7       | 107.3      | 125.6      | 140.5      | 164.0      | 166.0      |       |

All dimensions in millimeters.

### PACKAGING DATA

| Gland size        | 0               | 1               | 2               | 3               | 4               | 5    | 6    | 7    | 8    |
|-------------------|-----------------|-----------------|-----------------|-----------------|-----------------|------|------|------|------|
| Glands per bag    | 10              | 10              | 5               | 5               | 3               | 1    | 1    | 1    | 1    |
| Bags per Carton   | 15              | 15              | 10              | 8               | 10              | N/A  | N/A  | N/A  | N/A  |
| Carton Dim. (mm)  | 170 x 265 x 260 | 170 x 265 x 260 | 170 x 265 x 260 | 170 x 265 x 260 | 170 x 265 x 260 | N/A  | N/A  | N/A  | N/A  |
| Weight (kg) / bag | 0.82            | 1.27            | 1.1             | 1.16            | 1.18            | 1.19 | 1.65 | 2.39 | 2.45 |

### SPECIFICATION GUIDE

\*Note: Specifiers may use this wording to specify the Pratley Ex e Ultra Gland.

- Must be fully certified Ex e and waterproof to SANS 60079-0, 60079-7 & 61241.
- Incorporate loose cone design to ensure proper clamping and earth continuity between the body of the gland and the steel wire armouring of the cable.
- Make use of custom made lead bush to seal and ensure earth continuity with lead sheath of the cable.
- Supplied complete with feathered nylon nipple gasket and waterproofing rubber shroud.

Pratley (Pty) Limited (Reg. No. 1996/003890/07) An Affiliate of the Pratley Group of Companies

Jackson Street • Fictoria • Krugersdorp • Gauteng - Telephone +27 11 955 2190/8 • Fax +27 11 955 3918  
PO Box 3055, Kenmare 1745 • Gauteng • South Africa - e-mail: sales@pratley.co.za • www.pratley.com