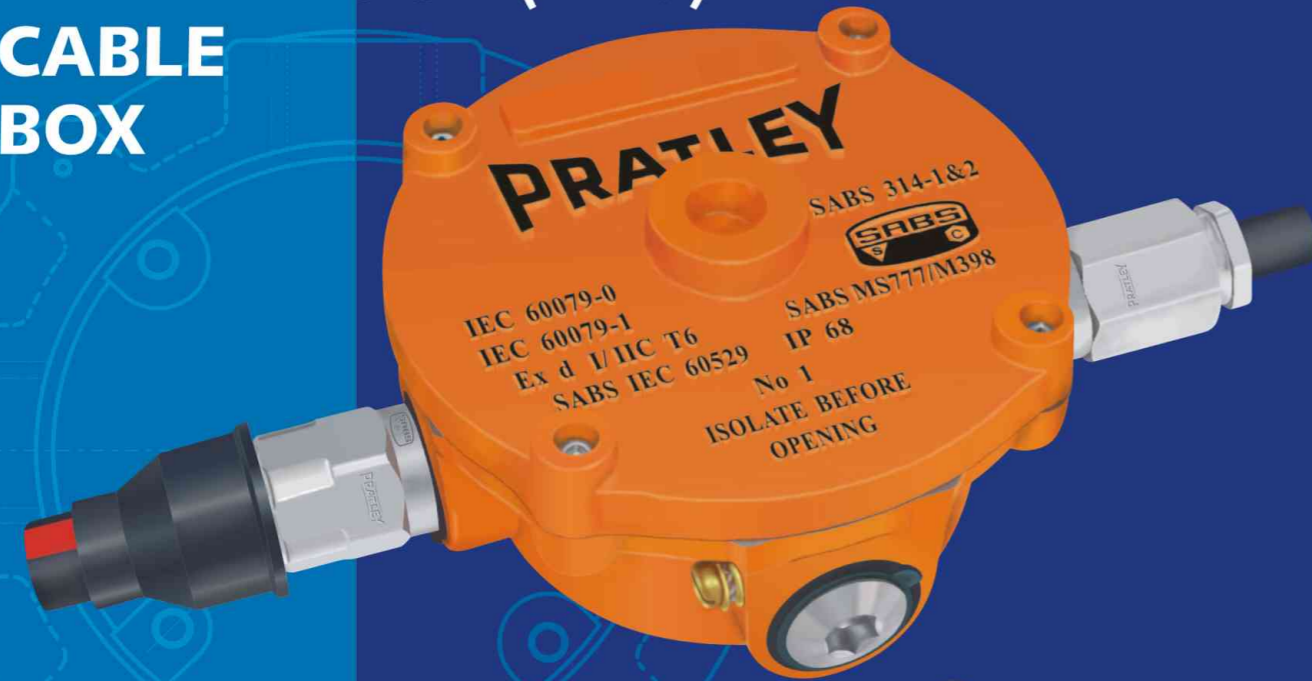




FLAMEPROOF (Ex d) CABLE BOX



COMBINED CONDUIT/ STOPPER BOX

**"SAFETY
IS NOT
NEGOTIABLE"**



Ex d
IP68
SANS 60529
SANS 60079-0
SANS 60079-1
Temp Class T6

Suitable for use in
Zone 1, 2, 21 & 22 (Ta=T6)
Surface & Underground.

Gas Groups I, IIA & IIB
Sizes 1 & 2 also Group IIC

FEATURES & BENEFITS

- Ultra quality means Ultra safety!
- A robust fine grained iron casting
- Internal earthing boss
- External earthing screw
- Central boss on lid
- accommodates other Ex d attachments
- For surface & underground applications
- Can also be used as combined conduit/stopper box
- Many accessories available
- Lid gasket keeps the box moisture and gas tight (IP68)

PRATLEY Ex d/e FLAMEPROOF ADAPTORS

If it is necessary to fit a larger cable into the box than it would normally accept, an adaptor may be used, provided the conductors of the cable will pass through the bore of the adaptor. Flameproof Adaptors are supplied complete with Waterproofing Gaskets.

PRATLEY Ex d/e FLAMEPROOF METRIC ADAPTORS

Adaptor Size	Bore Dia. mm	Catalogue Number	Usual Pack Qty.
20M - 25F	14.9	52079	10
25M - 32F	20.2	52080	10
25M - 40F	20.2	52081	10
32M - 40F	26.2	52082	10
32M - 50F	26.2	52083	10
40M - 50F	34.4	52084	10
50M - 63F	43.5	52085	10
63M - 75F	56.0	52086	10

PRATLEY Ex d/e FLAMEPROOF METRIC - NPT ADAPTOR

Adaptor Size	Bore Dia. mm	Cat. Number	Usual Pack Qty.
20M - 1/2"NPT F	10.7	46999	10
20M - 1/2"NPT F	15.7	47000	10

M = Male; F = Female

PRATLEY NON-SPARKING END CONNECTORS AND INSULATING SLEEVES

Non-sparking Connectors may be used with Pratlley Ex d Cable Boxes.

PRATLEY NON-SPARKING END CONNECTORS

Size	Dinky	Small	Medium	Large	Extra Large
Catalogue No.	63200	63201	63202	63203	63204
Usual Pack Qty.	100	50	20	20	10

PRATLEY INSULATING SLEEVES

Size	2/D	3/S	4/M	5/L	6/XL
Catalogue No.	04014	04015	04016	04017	04018
Usual Pack Qty.	50	25	20	10	10

PRATLEY Ex d/e ENVIRO COMPRESSION GLANDS

Ultra tough corrosion resistant plastic encapsulated brass cable glands for circular unarmoured cable in highly corrosive environments.

Fully certified to SANS, BS EN and IEC specifications for use with Ex e and Ex d IIA and IIB apparatus in Zone 1, 2, 21, 22 areas.



PRATLEY Ex e/d ENVIRO COMPRESSION GLANDS

Size	Nipple Thread mm	Catalogue Number	Usual Pack Qty.
00	16	32109	10
0s	20	32108	10
0	20	30100	10
1	20	32101	10
2	25	32102	5
3	32	32103	5
4	40	32104	3
5	50	32105	2
6	63	32106	1
7	75	32107	1

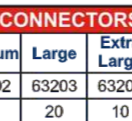
PRATLEY KWIKBLOKS AND MOUNTING RAILS

A wide range of Kwikbloks are available. For more detailed information please refer to the Kwikbloks Catalogue and Price List.

N35 slotted Mounting Rail and hold-down bracket is available to fit all box sizes.

PRATLEY SLOTTED MOUNTING RAIL AND BRACKET

Box Size	1	2	4
Catalogue No.	30120	N/A	N/A



ACCESSORIES

PRATLEY WATERPROOFING SHROUDS(SHORT)

By effectively outer sealing the gland, Pratlley shrouds prevent the ingress of moisture and consequent corrosion of armouring wires. This ensures a permanent earth path and improved safety! Their totally unique design also self-dries the cable via one way vapour release valve action.



WATERPROOFING SHROUDS

Shroud Size	0	1	2	3	4	5	6	7	8
Catalogue No.	03010	03011	03012	03013	03014	03015	03016	03017	03017
Usual Pack Qty.	20	20	20	20	20	20	10	10	10

PRATLEY Ex d FLAMEPROOF PLUGS

Nickel plated brass plugs with hex socket head. Supplied complete with Waterproofing Gasket.



PRATLEY Ex d FLAMEPROOF PLUGS

Plug Size	20 mm	25 mm	32 mm	40 mm	50 mm	1/2" NTP
Hex Socket Size	10 mm	10 mm	16 mm	16 mm	16 mm	16 mm
Cat. Number	25001	25002	25003	25004	25005	25012
Usual Pack Qty.	10	10	10	10	10	10

PRATLEY Ex d/e FLAMEPROOF REDUCERS

Box entries can be modified to take a smaller size gland by fitting a Flameproof Reducer. These Reducers are supplied complete with Waterproofing Gaskets.

PRATLEY Ex d/e FLAMEPROOF REDUCERS

Adaptor Size	Catalogue Number	Usual Pack Qty.	Adaptor Size	Catalogue Number	Usual Pack Qty.
20M - 16F	51068	10	50M - 32F	51076	10
25M - 20F	51069	10	50M - 25F	51077	10
32M - 25F	51070	10	50M - 20F	51078	10
32M - 20F	51071	10	63M - 32F	51079	10
40M - 32F	51072	10	63M - 40F	51080	10
40M - 25F	51073	10	63M - 50F	51081	10
40M - 20F	51074	10	75M - 40F	51084	10
50M - 40F	51075	10	75M - 50F	51085	10
			75M - 63F	51086	10



Ex d/e FLAMEPROOF GLANDS & Ex d/e FLAMEPROOF COMPRESSION GLANDS

Fully certified to SANS and IEC specifications for use on Ex d and Ex e apparatus in Zone 1 areas and all gas groups. Will maintain IP68 rating of enclosure.

Pratlley Flameproof Cable Glands are designed for threaded hole applications. They are supplied complete with waterproofing shrouds, Rubber Bushes, Sealing Gaskets and patented safety gauge. Flameproof Cable Glands for lead sheathed cable also available.

For all circular unarmoured cable. Pratlley Flameproof Compression Glands are designed for threaded hole applications. They are supplied complete with, Sealing Gaskets and patented safety gauge.

PRATLEY Ex d/e FLAMEPROOF CABLE GLAND SIZES

Gland Size	Nipple Thread	Cat. Number	Usual Pack Qty.
0	20 mm	16200	1
1	20 mm	16202	1
2	25 mm	16204	1
3	32 mm	16206	1
4	40 mm	16208	1
5	50 mm	16210	1
6	63 mm	16212	1

PRATLEY Ex d/e FLAMEPROOF COMPRESSION CABLE GLAND SIZES

Gland Size	Nipple Thread	Cat. Number	Usual Pack Qty.
0	20 mm	46000	1
1	20 mm	-	1
2	25 mm	46020	1
3	32 mm	46030	1
4	40 mm	46040	1
5	50 mm	46050	1
6	63 mm	46060	1



Pratlley (Pty) Limited (Reg. No. 1996/003890/07)
An Affiliate of the Pratlley group of companies
Jackson Street • Factoria • Krugersdorp • Gauteng
PO Box 3055, Kenmare 1745 • Gauteng • South Africa
Telephone +27 11 955 2190/8 • Fax +27 11 955 3918
www.pratlley.com

POLICY STATEMENT

"It is Pratlley policy to manufacture and market products, the performance of which, must at all times exceed that of any other directly competing product on the world market! We invite you to put this statement to the test."

KGM Pratlley
CEO

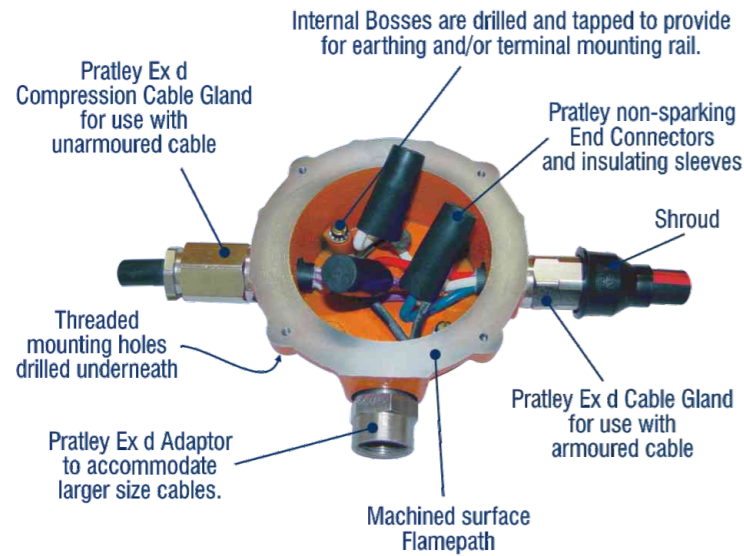
PRATLEY FLAMEPROOF (Ex d) CABLE BOX



These boxes have a flame path and a lid gasket. They are therefore completely waterproof and gas tight.

Available in 2-, 3- and 4-way configurations all with precision threaded entries to accept Prately Ex d Cable glands, reducers, adaptors or blanking plugs.

A robust fine grained iron casting with an orange paint finish.



Internal Bosses are drilled and tapped to provide for earthing and/or terminal mounting rail.

Prately Ex d Compression Cable Gland for use with unarmoured cable

Prately non-sparking End Connectors and insulating sleeves

Shroud

Threaded mounting holes drilled underneath

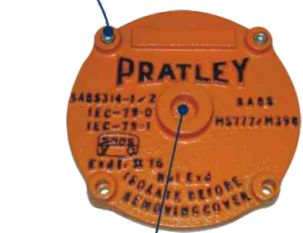
Prately Ex d Adaptor to accommodate larger size cables.

Prately Ex d Cable Gland for use with armoured cable

Machined surface Flamepath

Allen Head Screw (can be bought separately if need to be replaced).

Flamepath



The Central Boss on the lid can be drilled and tapped by Prately to accommodate other flameproof attachments (see accessories).

Lid Gasket keeps the box both moisture and gas tight.



External Earth

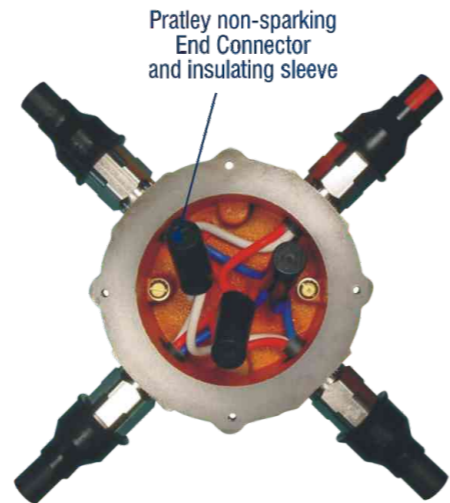
CONFIGURATIONS AND SIZES					
Box Size	Nipple Thread	Empty Volume ml	No. of Entries	Cat. No.	
No. 1	20 mm	378	2	17101	
			3	17102	
			4	17103	
No. 2	25 mm	689	2	17104	
			3	17105	
			4	17106	
No. 4	40 mm	3671	2	17107	
			3	17108	
			4	17109	

SAFETY NOTE: Size 4 not rated for Group IIC

Use catalogue no. when ordering

EASE OF ELECTRICAL CONNECTION

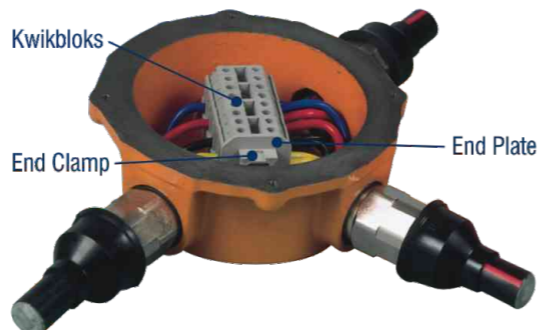
The connection of conductors can be achieved by either making use of Prately Kwikbloks mounted on a N35 "Tophat" rail or Prately Non-Sparking End Connectors and Insulating Sleeves. End Connectors and long conductor tails allow easy fitting outside the box before folding neatly back inside.



Prately non-sparking End Connector and insulating sleeve

FACTORY FITTED TO CUSTOMERS SPECIFICATIONS

Boxes can be factory fitted with an N35 mounting rail and Prately Kwikbloks to customers requirements. Pre-cut lengths of cable can also be factory fitted.



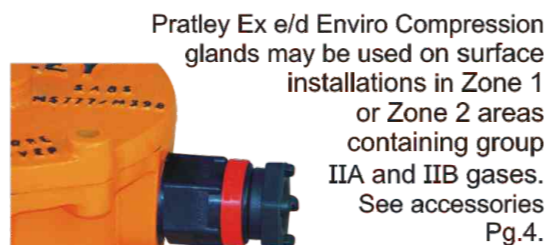
Kwikbloks

End Clamp

End Plate

Box Size	NUMBER OF KWIKBLOKS® PER Ex d BOX	
	Kwikblok® Designation	
1	IK3 (30207) 750/800 V 27A	IK5 (30200) 750/800 V 36A
	Ex e IK3 (30326) 550 V 15A	Ex e IK5 (30327) 550 V 21A
2	13	11
4	28	24

FITTED WITH ENVIRO COMPRESSION GLAND (GROUPS IIA & IIB ONLY)

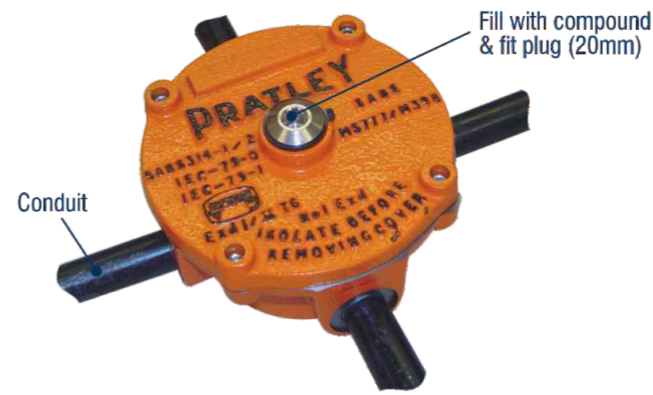


Prately Ex e/d Enviro Compression glands may be used on surface installations in Zone 1 or Zone 2 areas containing group IIA and IIB gases. See accessories Pg.4.

PRATLEY FLAMEPROOF (Ex d) COMBINED CONDUIT/ STOPPER BOX

FITTED WITH LIDS IN HORIZONTAL POSITION

Combined Conduit/Stopper Boxes (sizes 1 & 2) are manufactured in a 4-way configuration only, plugs being fitted to unwanted entries. The Stopper Box Lid is threaded (20mm) and fitted with a plug for filling with compound, which must be done.

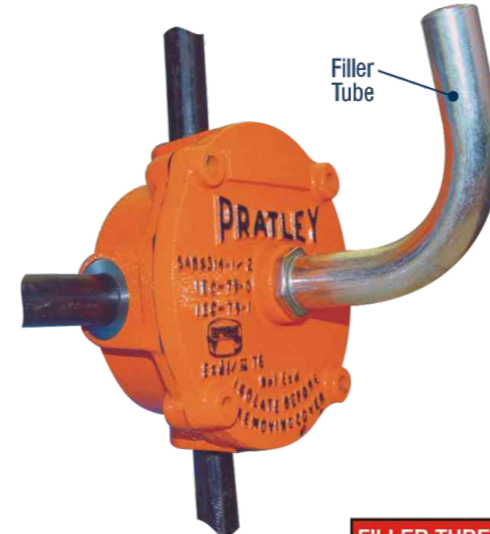


Conduit

Fill with compound & fit plug (20mm)

FITTED WITH LIDS IN VERTICAL POSITION

When the Combined Conduit/Stopper Box is mounted with the lid vertical, a special filler tube is required. This tube can be removed when the compound has set.



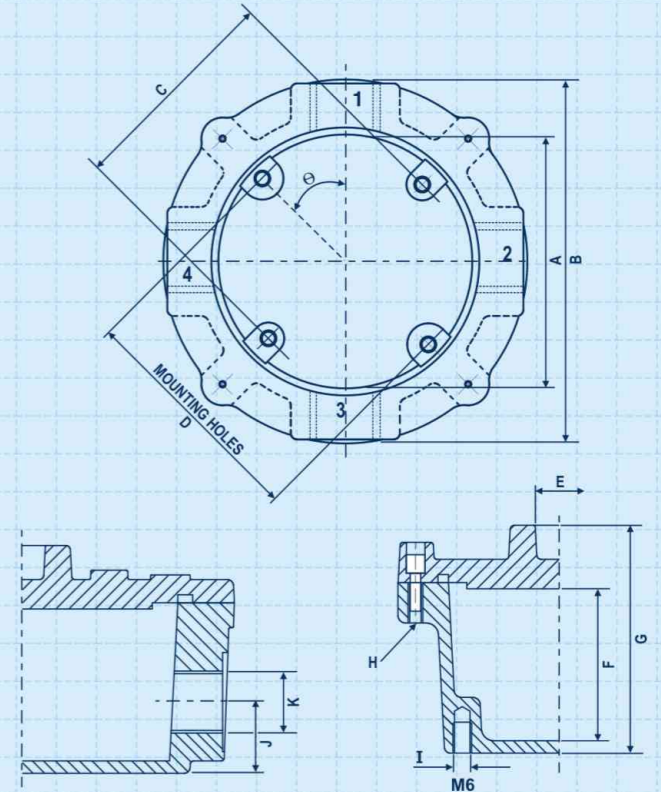
Filler Tube

FILLER TUBE FOR ABOVE	
CAT. NO.	THREAD
17085	20 mm

CONFIGURATIONS AND SIZES					
Size	Entry Thread	Lid Entry Thread	Empty Volume ml	No. of Entries	Cat. No.
No. 1	20 mm	20 mm	378	2	17063
				3	17064
				4	17065
No. 2	25 mm	20 mm	689	2	17066
				3	17067
				4	17068

Use catalogue no. when ordering

DIMENSIONS & SPECIFICATIONS



DIMENSIONS			
Box Number	No. 1	No. 2	No. 4
Overall outside diameter	131,7	157,2	254
A Inside diameter (bottom)	102	124	216
B Across entries	135	160,3	254
C Rail mounting & earth lug centres	82,5	105,5	184
D Mounting hole centres	89	114,3	225,4
E Central boss inside diameter	16	16	16
F Box inside height	49	55	101,5
G Box overall height	75,5	84,5	136
H Thread size - cap screw	3/16"	3/16"	5/16"
Allen head screw size (lid)	5/32"	5/32"	7/32"
I Hole - thread size	M6	M6	M6
J Entry centre height	23	25	47,6
K Entry thread	M20	M25	M40
∅ Angle (see diagram)	45°	45°	30°

SPECIFICATION GUIDE

The Flameproof box must be:

- Ex d certified to SANS 60079-0 and SANS 60079-1.
- Temperature class T6.
- IP 68 certified to SANS 60529.
- Suitable for gas groups I, IIA, IIB (and IIC in the case of sizes 1 & 2).
- Suitable for surface and underground.
- Have provision for internal and external earth attachment
- Must have a lid gasket.
- Available in 2-, 3- and 4-way configurations.

PACKAGING DATA

Box Size	Pack Dimensions	Weight (g)	Volume (ℓ)
1	140 x 140 x 80 mm	3100	1.568
2	165 x 165 x 88 mm	4200	2.396
4	260 x 260 x 140 mm	15400	9.464